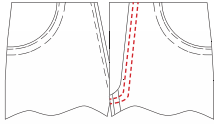
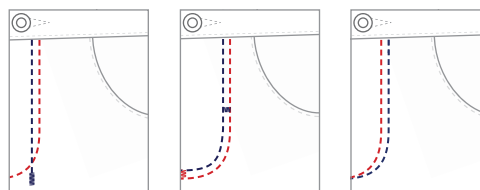


JEANS TECHNOLOGY  
Vibemac Know-How  
**Step Sequence 11**



This unit, like every Vi.Be.Mac. unit represents the concept of constant stitching quality and productivity. The 1010V4F1 (double needle) or the 1010V4F1M (single needle) are two automatic programmable unit which carries out "J" seam on the front fly panel, on jeans, casual trousers and workwear. This machine permits to create of customized "J" patterns with the maximum freedom of style, satisfying any fashion request, with no cost in terms of extra jigs. It can be transformed for operations like back pocket embroidery, sewing darts and pleats, run flap stitch, simply purchasing the necessary parts. The 1010V4F1 can achieve an incredible production rate, with no need of skilled operator. Is your buyer requiring a very complicated fly design? Are you manufacturing your own brand and your desire is to differentiate your product from who copies yours? 1010V4F1 is the solution!

ONLY FEW Js SAMPLES



## Technical Features

The “J” seam unit 1010V4F1 (Double Colour Technology), is a machine equipped with Mitsubishi-Vi.Be.Mac. direct drive PLK-G, two needle lock stitch in the V4F1 model, 1 needle lockstitch in the V4F1M model, with shuttle hook and thread trimmer.

The machine can be converted to perform operations like back pocket embroidery, sewing darts and pleats, run flap stitch, simply purchasing some parts this means that simply purchasing the necessary parts it can be converted as per customer's request.

The 1010V4F1 gives a perfect match between fly-piece and front left panel.

It is possible to apply in one sewing cycle front left panel together with the zipper/button hole.

Thanks to the loader and the stacker devices the machine can achieve an incredible production rate, with no need of any skilled operator or helper who marks the front left panel.

The sewing area is the widest in the market (245 x 145 mm), while the moulds are the cheapest worldwide (local made in 5 continents).

The sewing patterns are supplied by Vi.Be.Mac. via email in maximum one working day, thanks to the USB flash memory device it is possible to upload the program directly on the machine's control box.

In small textile companies, where production is not high enough to require the use of the unit for 8 consecutive hours, the machine can perform the other operations mentioned above.



PRE-LOADING DEVICE



STACKER

## Technical Specifications

**Sewing Head:** Mitsubishi PLK-G10 MAXI Vi.Be.Mac.

**Max Sewing Area:** 258 X 158 mm

**Clamp Sewing Area:** 245 X 145 mm

**Stitching Length:** from 0,1 to 20 min (0,1 Step)

**Control Box:** Mitsubishi PLKGCU20

**Sewing Machine Motor:** Ac Servomotor Mitsubishi 750w (Direct Drive System)

**Max Sewing Speed:** 2800 Rpm (single needle version)

**Time Required To Change Clamps / Moulds:** 3 min

**Easy Design Program**

**Application:** light to medium, medium to heavy

**Storage Of Pattern Data In The Memory:** 512 patterns in the internal memory  
+ Usb Flash memory stick

**Product Counter:** up / down system (0-9,999)

**Power Supply:** 220 V 50/60 Hz

**Gross Weight:** 238 kg  
**Fumigated Recycled Packing Dimension**

